

VINTAGE RC SOCIETY FELLOWSHIP GATHERING

**FEBRUARY 22 & 23, 2019
PUNTA GORDA, FLORIDA**

ORGANIZER: JOE FIFE, 239-470-3809 Cell, EMAIL: JFRET767@GMAIL.COM
ASSISTANT: PAT FIFE, 239-470-3697 Cell, EMAIL: PATF524@GMAIL.COM
<http://www.vintage.rcsociety.org>



A FLYING & "BS" GET TOGETHER (VINTAGE PLANES AS WELL AS ALL OTHER PLANES WELCOME!)

PILOT REGISTRATION: \$10.00 Donation To Club
PILOTS MUST POSSESS CURRENT AMA MEMBERSHIP
(VRCS MEMBERSHIP NOT REQUIRED TO FLY)

HOST CLUB: CHARLOTTE RADIO CONTROL SOCIETY Map & Directions To Field Below.
GPS Location of Field Gate: 26°58'25.16" NORTH, 81°55'46.17" WEST
<https://www.charlotterc.com> Check here for field map & club info.

GENERAL FLYING: Friday & Saturday flying begins at 9:00AM, till dark, for guests & host club members; (There Will Not Be Any Organized Contests, Just The Fun Of Flying!) Lunch is available on the field for these 2 days.

Thursday & Sunday the field will be available to all for open flying, if you choose. (Contact Joe Fife 239-470-3809-Cell to assure gate will be open.)

Tailgate Swap Shop Each Day – Bring Your Trash & Treasures For Sale

MOTORHOME CAMPING: CHARLOTTE RC SOCIETY SHELL CREEK FLYING FIELD. Allowed again this year. Primitive Camping Only. There are no hookups for water, electric, sewage or cable. There are "Porta Potties" available for your use & of course the flying field during posted flying hours only. All who used the site the last few years, enjoyed the peace & quiet & of course the camaraderie. We can probably arrange for you to hitch a ride to our dinner destinations with one of the other participants.

LADIES: Lots of boutique shopping within walking distance of the hotel & lots more to do within a short drive. (NOTE: Everyone loves Fisherman's Village & The Fort Myers Flea Market.) We can talk about what everyone would like to do on Friday and Saturday, at dinner Thursday night. You can call Pat Fife's Cell for suggestions or questions: (239) 470-3697 Cell.



Local Attractions:

Located in historical downtown Punta Gorda

- ¼ miles to Florida Adventure Museum
- ½ miles to Punta Gorda Shopping
- 1 mile to Fisherman's Village
- 1½ miles to Charlotte Regional Medical Center
- 6 miles to St Joseph's Hospital
- 6 miles to Fawcett Hospital
- 7 miles to Port Charlotte Beach
- 4 miles to Regal Cinema
- 0.1 mile to Gilchrist Park
- 1.7 miles to Bayshore Live Oak Park
- 2.1 miles to Charlotte County Historical Center
- 3.7 miles to Charlotte County Motorsports Park
- 3.9 miles to Port Charlotte Beach Park
- 4.6 miles to Lake Betty Park
- 4.8 miles to Cultural Center of Charlotte County
- 7.7 miles to Port Charlotte Town Center
- 7.8 miles to Kidstar Park
- 7.8 miles to Sun Flea Market
- 9.1 miles to Charlotte Sports Park
- 9.2 miles to Deep Creek Preserve
- 10.5 miles to Lettuce Lake Boat Ramp
- 15.9 miles to Myakka State Forest
- 16.6 miles to Don Pedro Island State Park

Nearby Cities:

- 1 mile to Port Charlotte
- 20 miles to North Port
- 30 miles to Venice
- 30 miles to Fort Myers
- 30 miles to Arcadia
- 40 miles to Bradenton
- 45 miles to Sarasota



DINING INFO:

(1) "THURSDAY NIGHT ARRIVAL GET TOGETHER" We will meet in "Hurricane Charley's Restaurant" Lobby at 5:30, 300 W. Retta Esplanade, (941) 639 9695, or (941) 575-0062 so that those staying at the hotel or elsewhere will be in the same place. We will have dinner together there.

(2) "FRIDAY NIGHT DINNER GATHERING" **Same venue as last year.** MONTY'S" CASUAL ITALIAN RESTAURANT & PIZZERIA, 2515 Tamiami Trail, (941) 637-0008. Please meet us at the restaurant at **5:30**, as this appears to be the favorite way for us to meet. If you need a ride call Pat Fife (239-470-3697) & we will make arrangements to get you to the restaurant. Directions from the PG Waterfront Hotel are: make a left out of the hotel parking lot onto W. Retta Esplanade. At the traffic light make a right onto Tamiami Trail South (Rt 41 South). Restaurant is approximately a mile & ¼ south on your right (Free standing building). Reservations will be held under the name: Pat Fife.

(3) "SATURDAY EVENT DINNER" LAISHLEY CRAB HOUSE, 150 Laishley Court (941) 205-5566. (Everyone liked this place the last few years.) Please meet us at the restaurant at **5:30**, as this appears to be the favorite way for us to meet. If you need a ride call Pat Fife (239-470-3697) & we will make arrangements to get you to the restaurant. Directions from the PG Waterfront Hotel are: make a left out of the hotel parking lot onto W. Retta Esplanade. At the traffic light cross over Rt 41S & stay on W. Retta Esplanade, continue to the next traffic light at Rt 41N & continue across the intersection, staying on W. Retta Esplanade continue to a left turn on Nesbit that takes you to Laishley Crab House. Reservations will be held under the name: Pat Fife.

HOTEL INFORMATION: PUNTA GORDA (PG) WATERFRONT HOTEL & SUITES, 300 Retta Esplanade, Punta Gorda, Florida 33950 Local phone: 941-639-1165, WWW.PGWATERFRONT.COM. Reservations are being held under: "Vintage Radio Control Society" or VRCS. Rooms are available at a rate of \$159.00 for a city view this year. The hotel is under new management & they feel because it is high season they will fill the hotel. To obtain this rate you must make the reservation with Maria Grebe Hotel General Manager. If you wish you can probably get a better rate on I-75 just before Exit 164. Rate includes free Wi-Fi, & Continental Breakfast from 7-10:30AM.

TO AVOID HAVING TO SEARCH FOR A ROOM. PLEASE BOOK AS SOON AS POSSIBLE

NOTE: Hotel Is Still Remodeling. Lobby is really pretty.



Check-In/Out Information:

Check-in time starts at 4:00 PM & ends at (Midnight)

Check-out time is 11:00 AM

Property Location:

A stay at Punta Gorda Waterfront Hotel & Suites places you in the heart of Punta Gorda, steps from Gilchrist Park & close to Bayshore Live Oak Park. This hotel is within close proximity of Punta Gorda History Park, Charlotte County Historical Center & Charlotte County Motorsports Park.

More hotel details on next page:

Rooms:

Make yourself at home in one of the 188 air-conditioned rooms, featuring refrigerators & LED televisions. Complimentary wireless Internet access keeps you connected, & cable programming is available for your entertainment. Bathrooms have complimentary designer toiletries & hair dryers. Conveniences include desks, microwaves, complimentary newspapers & coffee/tea makers, as well as phones with free local calls.

Recreation, Spa, Premium Amenities:

Take advantage of recreation opportunities such as an outdoor pool, or other amenities including complimentary wireless Internet access. Additional amenities include television in common area, a picnic area, and barbecue grills. Smoke Free Property.

Dining:

A hot/cold buffet breakfast is served daily in "Hurricane Charley's" restaurant for approximately \$9.00. The restaurant which is attached to the hotel is now open for lunch and dinner, and features a bar and a pool view with outdoor seating.

Other Amenities:

Featured amenities include a business center, dry cleaning/laundry services, and a 24-hour front desk. Free self parking is available onsite.

DIRECTIONS TO THE PUNTA GORDA (PG) WATERFRONT HOTEL FROM (I-75S):

1. From I-75S take exit 164, turn left onto US-17S Heading west into Punta Gorda.
2. Drive for a half-mile continue onto Duncan Rd. This is also US-17S heading west (0.9mi)
3. Then continue onto E. Marion Ave, this is still US-17S heading west (1.1 mi)
4. Then continue onto W. Marion.
5. At the light Cross US 41S staying on W. Marion.
6. Drive about 1 block more on W. Marion then make a right onto Harvey St.
7. Then make a right onto West Retta Esplanade.
8. PG Waterfront Hotel and Suites will be on your left next to Gilchrest Park.

DIRECTIONS TO THE PUNTA GORDA (PG) WATERFRONT HOTEL FROM PORT CHARLOTTE

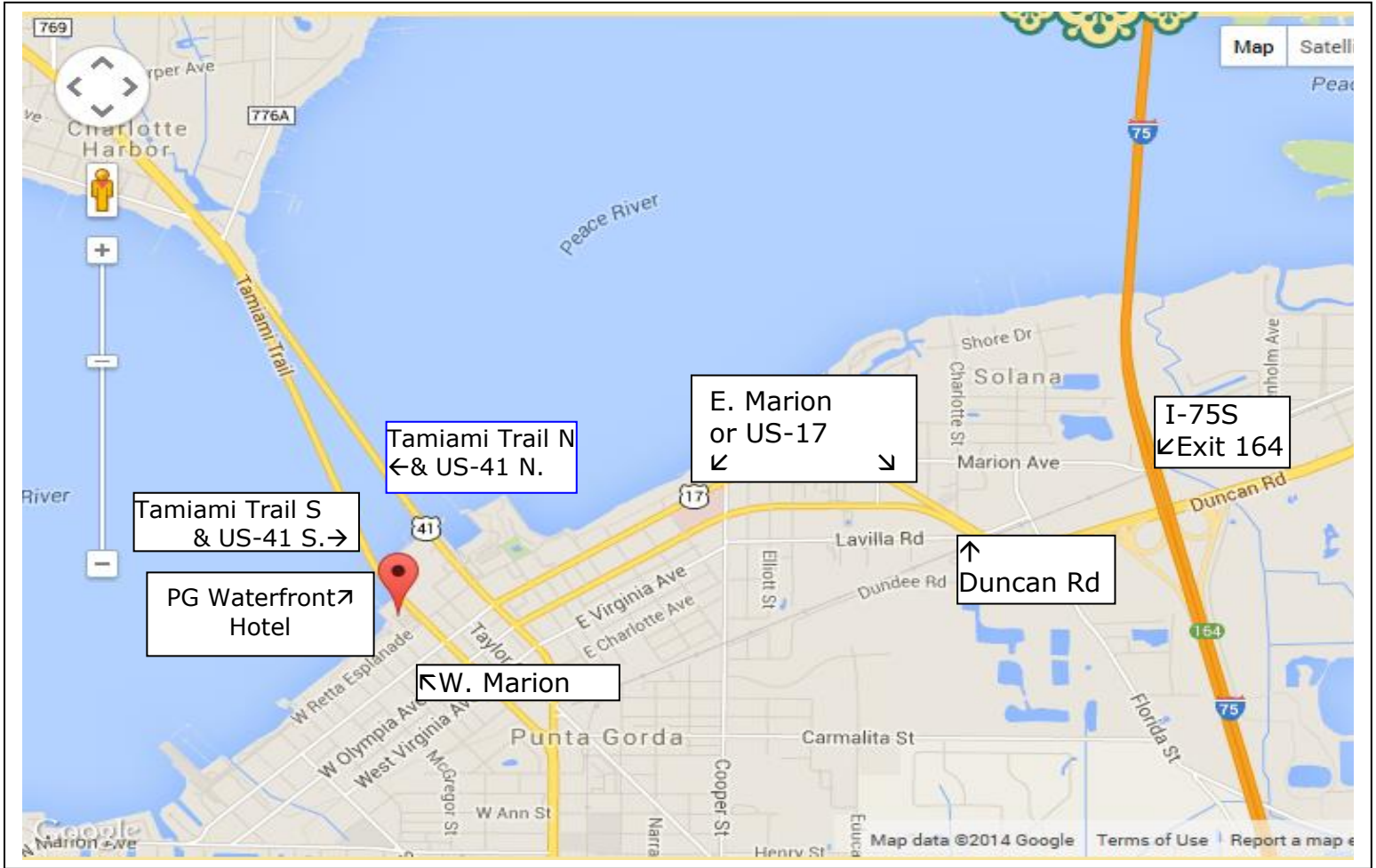
1. Head south on US-41S/Tamiami Trail toward Punta Gorda.
2. Cross the Peace River Bridge.
3. After you cross the bridge you can see the hotel on your right.
4. Turn right onto W Retta Esplanade. PG Waterfront Hotel and Suites will be on your right.

DIRECTIONS TO THE PUNTA GORDA (PG) WATERFRONT HOTEL FROM (I-95S):

1. Use the map at the end of the flyer to get to Washington loop road. Then to get to the hotel continue past both North & South ends of "Washington Loop Road". Stay on US-17S into Punta Gorda.
2. Continue onto Duncan Rd. This is also US-17S heading west (0.9 mi)
3. Continue onto E. Marion Ave this is still US-17S heading west (1.1 mi)
4. Then continue onto W. Marion.
5. At the light Cross US 41S staying on W. Marion.
6. Drive about 1 block more on W. Marion then make a right onto Harvey St.
7. Then make a right onto West Retta Esplanade.
8. PG Waterfront Hotel and Suites will be on your left next to Gilchrest Park.

MAP TO HOTEL & FIELD ON NEXT PAGE

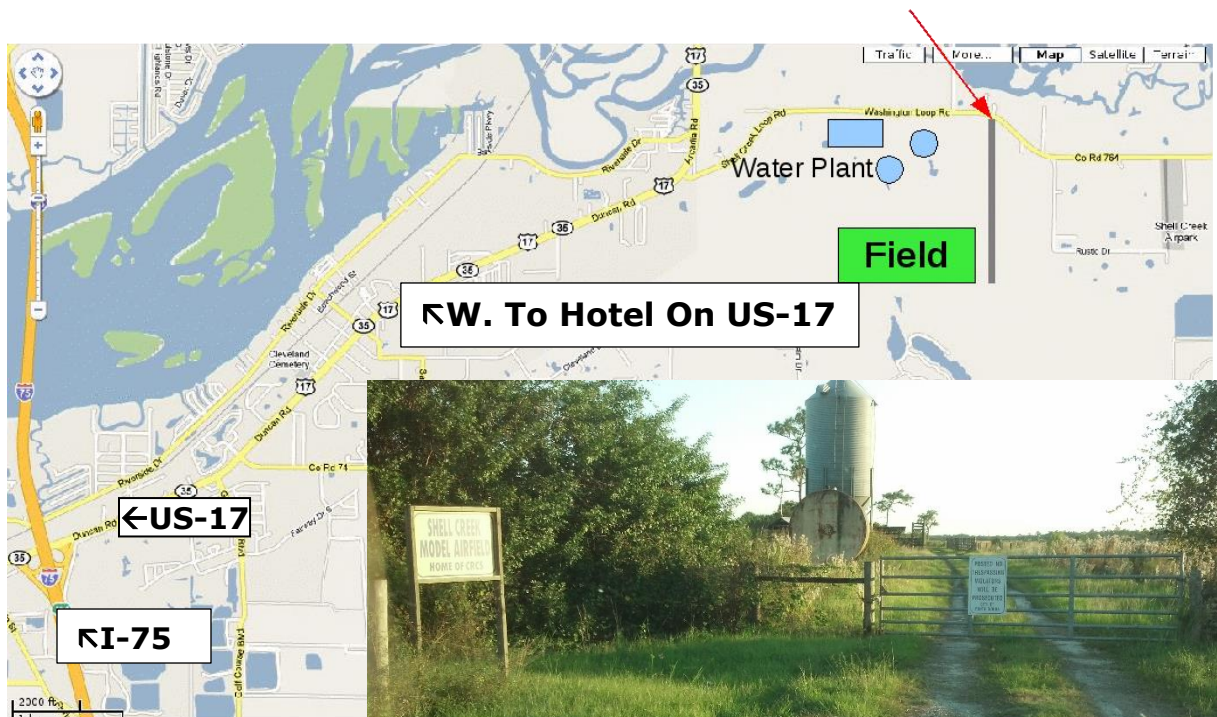
MAP TO HOTEL FROM I-75 S & US-41 S (TAMIAMI TRAIL)



MAP TO FIELD FROM I-75S & PG WATERFRONT HOTEL:

CRCS Flying Field We will have small Vintage RC Signs at the South end of Washington Loop Road as well as at the RC fields gate & entrance road. **ALSO LOOK FOR CLUB SIGN ON WASHINGTON LOOP ROAD AT FIELD ENTRANCE ("Shell Creek Model Airfield").**

Gate/Access Road



Shell Creek Model Airport Gate & Access Rd

Directions To Field From Hotel: Field is easy to get to. Take Highway US-17N out of Punta Gorda to Washington Loop Road. Head east on Washington Loop Road for about a mile or so, until you see the Punta Gorda water works plant. Our flying site is located behind the water plant. The gate & access road are a few hundred yards past the water plant & is marked with a sign for Shell Creek Model Airport. Pass through the gate, then come down the access road until you see our field. If you are coming from the North down US-17S, make a left turn on Washington Loop Road. It is a loop so you can make the left at the north side (you will travel through the countryside for quite awhile before you see the airfield sign on your right.) Or you can continue down US-17S until you see the next left turn for Washington Loop Road. You will then follow the directions from above starting on Washington Loop Road heading east. If you have any problems call Joe (239) 470-3809 Cell.

MAP TO FIELD FROM I-95S:

CRCS Flying Field We will have small Vintage RC Signs at the South end of Washington Loop Road as well as at the RC fields entrance road. ALSO LOOK FOR CLUB SIGN ON WASHINGTON LOOP ROAD At FIELD ENTRANCE: ("Shell Creek Model Airfield").

Directions: Field is easy to get to.

1. Take I-95 South To Exit 129 (Okeechobee Rd/SR-70)
2. Turn Right (West) on Okeechobee Rd/SR-70
3. Follow for 90 miles into Arcadia.
4. Turn Left on US-17/S Desoto Ave/S Brevard Ave/FL-35
5. Follow US-17 South to Washington Loop Road. If you make the left on the North end of Washington Loop Road just follow it around through the country (quite a ways) till you reach the gate & access road of the CRCS flying field on the left. (Marked by a sign for the "Shell Creek Model Airfield", which is hard to see coming from the North. Look for our little Vintage RC Signs) Come down the access road until you see the field.
- 5a. If you continue further down US-17 & make the 2nd left on the South end of Washington Loop Road. Now just head east on Washington Loop Road for about a mile or so, until you see the Punta Gorda water works plant. Our flying site is located behind the water plant. The gate & access road (Marked by a sign) are a few hundred yards past the water plant on the right. Come down the access road until you see our field.
6. If you have any problems call Joe on his cell phone (239) 470-3809.

